

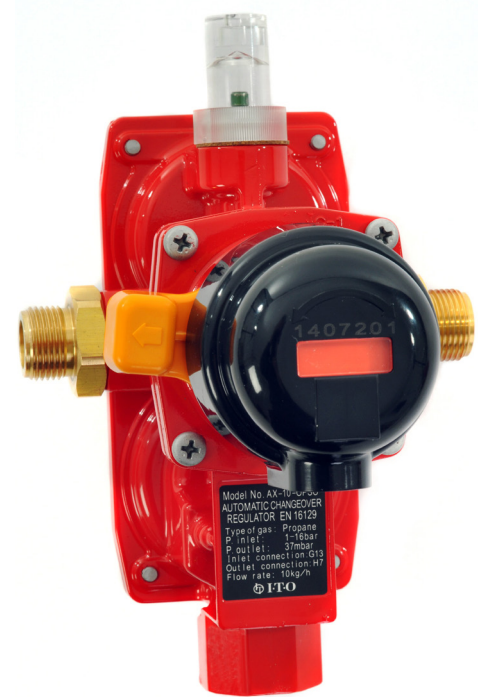
(T)AX10 OPSO: Telemetry Ready Auto-Changeover with OPSO

In 1964 the Ito Koki Co Limited was one of the first companies to develop automatic changeovers for LPG, since this date we have established a wide range of changeovers both in size, character and function.

In 1989 a further innovation added a telemetry enabled function which allows remote monitoring of the changeover via a broad range of interface options.

In 2013 we recorded our 9,000,000th sale of the 8 kg /hr version.

The (T)AX10 OPSO was developed for markets where an OPSO (Over Pressure Shut-Off) is required by law, features include

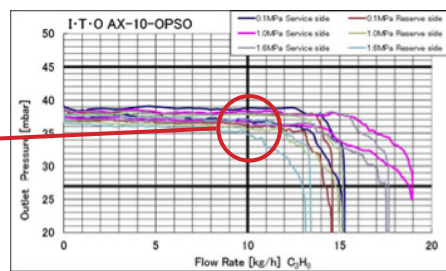


- **High Performance 10 kg/hr** – enables installations up to 8 cylinders
- **Aluminum Body** – lightweight and non-porous material
- **High Performance Coating** – Superior weather/salt/chemical resistance
- **Positive Operation, Latches on Changeover** – No hunting or chattering
- **BSI Certified to EN16129** – Safety and engineering excellence independently confirmed
- **Not a Me Too Product** – It’s an Individual

TECHNICAL DATA	PERFORMANCE
----------------	-------------

Product Reference	(T)AX10 OPSO
Gas Type	Propane
Flow Capacity	10 kg/hr
Inlet Pressure	1- 16 Bar
Nominal Outlet Pressure	37 mbar
Lock Up Pressure	50 mbar
Operating Temperature	-20 ~ +50°C
Inlet Connection	M20 x 1.5
Outlet Connection	Rp 1/2
Body Weight	0.882 kgs
Relief Valve Start Pressure	74 ~ 89 mbar
OPSO Working Pressure	90 ~ 110 mbar
Changeover Pressure	>500 mbar
Product Certification	EN16129 (BSI Laboratories)
Factory Certification	ISO 9001
Other sizes available	8, 10, 20, 30, 50 kg/hr

The **(T)AX10 OPSO** gives outstanding performance, the 10 kg/hr capacity is achieved whilst still providing a balanced outlet pressure.



Once the supply side has been exhausted the reserve side automatically begins supply, the switchover is 100% positive with no hunting, chattering or fluttering.

The OPSO status is designed to be easily viewed and also to be reset using a special tool built into the cap. It is recommended that reset is undertaken by a person with the necessary competence in relation to LPG equipment. **Safety is paramount!**

Engineered in aluminum the one piece construction offers a lightweight yet robust solution and with its specially developed Hydroxylated Acrylic Resin coating offers unparalleled corrosion resistance for years of reliable operation.

1 x 47 kg cylinder per side = 2.42 kg/hr 2 x 47 kg cylinders per side = 4.84 kg/hr 3 x 47 kg cylinders per side = 7.26 kg/hr 4 x 47 kg cylinders per side = 9.68 kg/hr	(T)AX10 OPSO = 10 kg/hr
---	--------------------------------

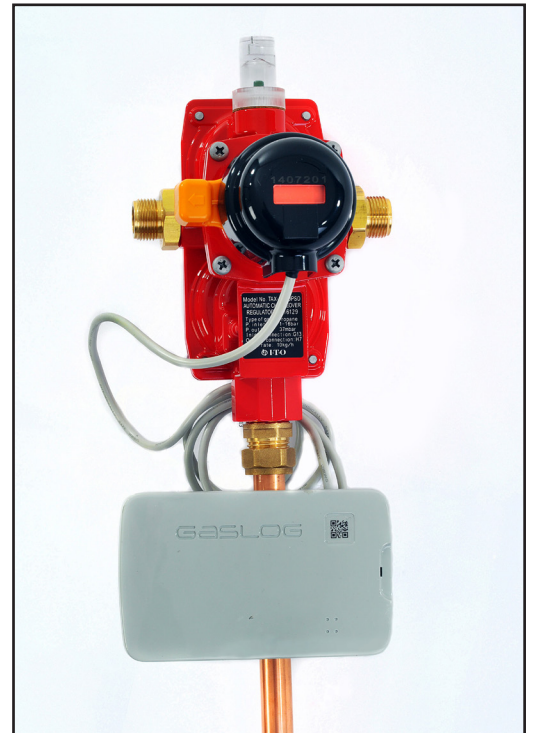
(T) For Telemetry

The **TAX 10 OPSO** incorporates telemetry connectivity. The transmitting cable enables the use of most telemetry interface arrangements and as an example the (T)AX range has 100% connectivity via the Gaslog® System from Silicon Controls.

Whenever one side of the installation empties and changes over a signal is sent to the local Gas Distributor or the Gas Company to alert them to arrange replacement and eliminate gas run outs. This replacement can be planned into journey plans, trucks schedules, and stock inventory; making the job of logistics simpler and more cost effective.

Gaslog® Benefits -

- **ATEX Zone 0 Certified** – Safe in hazardous locations
- **Roams on cellular networks** – Gives exceptional geographical coverage
- **Waterproof housing and connections** – Highly robust and reliable
- **10 Year Battery Life** – Zero maintenance
- **Operates from -30°C + 60°C** – Designed for hostile environments
- **Integrated cable and connector** – No wiring tools required



- Reduces distribution costs and improves both cash flow and customer service.
- Easily installed, easily monitored, secure reliable data.
- Cut out half- full delivery trucks, cut out wasted fuel, cut out duplicated journeys.
- Plan a schedule, plan the route, and reduce company fuel bills.
- Offer your customers peace of mind.

Model	Signal self-latching (Note*)
Actuating Method	Pressure detection using diaphragm, permanent magnet & reed switch
Reset Method	Manual in conjunction with handle
Signal Output	Volt Free Contact
Max on/off allowable voltage	DC-100V
Max on/off allowable current	DC-0.25A
Contact Resistance	Less than 1 Ω
Lead Wire	VCTF 0.5mm2(2C) x 100cm

Note* Changeover actions from the whole range are self-holding/latching in order to prevent hunting and chattering.